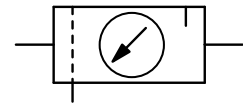


**Description** Solid, low-cost FRL service unit made of zinc die-cast equipped with pressure gauge.  
**Media** compressed air or non-corrosive gases  
**Supply pressure** max. 16 bar for metal bowl with sight glass, max. 30 bar for metal bowl without sight glass  
**Adjustment** by plastic knob with snap-lock up to G $\frac{1}{2}$   
 by hexagon head screw from G $\frac{3}{8}$  up to G1 $\frac{1}{2}$  on (CD.-1A.)  
 by T-handle from G1 $\frac{1}{2}$  (CD.-12.) up to G2 on  
**Relieving function** relieving, optionally non-relieving  
**Gauge port** G $\frac{1}{4}$  or G $\frac{1}{2}$  at CD.-01/-02, on both sides of the body, one screw plug supplied  
**Filter element** 20  $\mu$ m or 50  $\mu$ m, optionally 5  $\mu$ m or 50  $\mu$ m, made of propylene **Bowl** metal version with or without sight glass  
**Drainage** semiautomatic drain as standard, optionally automatic (max. 16 bar) or manual drain for max. 30 bar  
**Temperature range** -10 °C to 50 °C / 14 °F to 122 °F metal bowl with sight glass, for G $\frac{1}{2}$  to G $\frac{3}{2}$   
 -20 °C to 60 °C / -4 °F to 140 °F metal bowl with sight glass, for G $\frac{3}{8}$  to G2  
 -30 °C to 80 °C / -22 °F to 176 °F metal bowl without sight glass, for all sizes  
**Material**  
 Body: zinc die-cast at G $\frac{1}{2}$  and G $\frac{3}{4}$ , aluminium at G $\frac{3}{8}$  up to G2  
 Elastomer: NBR/Buna-N  
 Bowl: zinc die-cast



G $\frac{1}{8}$  up to G2

Dimensions			Combination	Bowl	Filter	Flow	Connection	Order
A	B	C	consisting	design	element	rate	thread	number
mm	mm	mm	of	made of / with		m <sup>3</sup> /h*1	G	

FRL unit, 2-part				P <sub>1</sub> : max. 16 bar, P <sub>2</sub> : 0.8...8 bar, 20 / 50 $\mu$ m, semiautomatic drain, relieving, with gauge				CD2	
80	201	128	BD+LD	metal/sight glass	20	27	450	G $\frac{1}{8}$ G $\frac{1}{4}$	CD2-01 CD2-02
128	248	148		metal/sight glass	50	108	1 800	G $\frac{3}{8}$ G $\frac{1}{2}$	CD2-03 CD2-04
275	314	179		metal/sight glass	50	300	5 000	G $\frac{3}{4}$ G1	CD2-06 CD2-08
386	314	179		metal/sight glass	50	300	5 000	G1 $\frac{1}{4}$ G1 $\frac{1}{2}$	CD2-10 CD2-1A
355	483	223		metal/sight glass	50	960	16 000	G1 $\frac{1}{2}$ G2	CD2-12 CD2-16



CD2-01/-02



CD2-03/-04



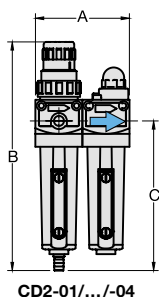
CD2-10/-1A

### Special options, add the appropriate letter

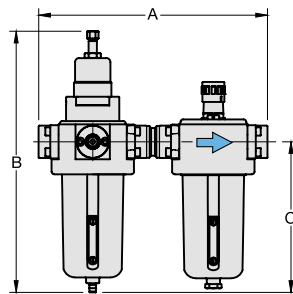
<b>5 <math>\mu</math>m filter element</b>		for G $\frac{1}{8}$ up to G $\frac{1}{2}$	CD2-...G
		for G $\frac{3}{8}$ up to G1	CD2-...G
		for G1 $\frac{1}{4}$ up to G2	CD2-...G
<b>0.3...3 bar regulation range</b>			CD2-...B
<b>1 ...15 bar</b>			CD2-...E
<b>operating press. 30 bar</b>	only for metal bowl (without sight glass) with manual drain		CD2-...NH
<b>manual drain</b>	max. 16 bar		CD2-...H
<b>automatic drain</b>	drainage by float valve, max. 16 bar	for G $\frac{3}{8}$ up to G2	CD2-...R

### Accessories, enclosed

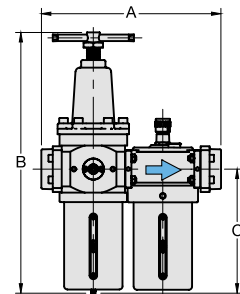
<b>mounting bracket</b>	made of steel	for G $\frac{1}{8}$ and G $\frac{1}{4}$	<b>BW30-02</b>
<b>mounting nut</b>	made of plastic	for G $\frac{1}{8}$ and G $\frac{1}{4}$	<b>M30x1,5K</b>
<b>mounting bracket</b>	made of steel	for G $\frac{3}{8}$ and G $\frac{1}{2}$	<b>BW50-03</b>
<b>mounting nut</b>	made of plastic	for G $\frac{3}{8}$ and G $\frac{1}{2}$	<b>M50x1,5K</b>
<b>mounting bracket</b>	made of stainless steel	for G $\frac{3}{4}$ up to G1 $\frac{1}{2}$ (1A)	<b>BW00-59S</b>
<b>set of brackets</b>	made of steel	for G1 $\frac{1}{2}$ (12) and G2	<b>BW00-61</b>



CD2-01/.../-04



CD2-06/-08/-10/-1A



CD2-12/-16

\*1 at 8 bar supply pressure, 6 bar outlet pressure and 1 bar pressure drop

**Further details:** see chapter for single devices  
**Spare parts:** see separate spare parts list

PDF CAD  
 www.aircom.net



Order example:  
 CD2-01